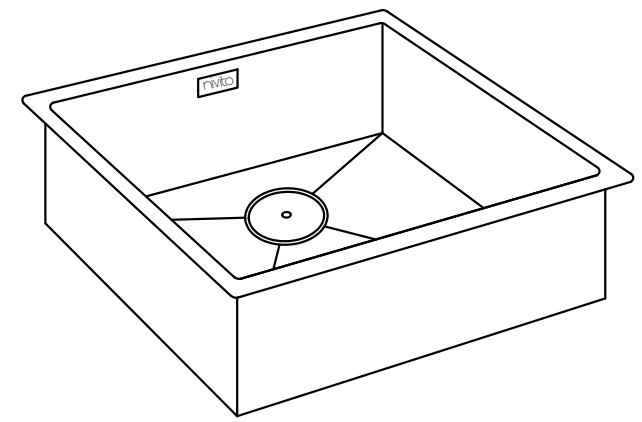
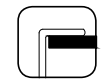


nivito™

INSTALLATION MANUAL



Flush-Mount



Top-mount



Undermount

nivito™

www.nivito.com

Cube.

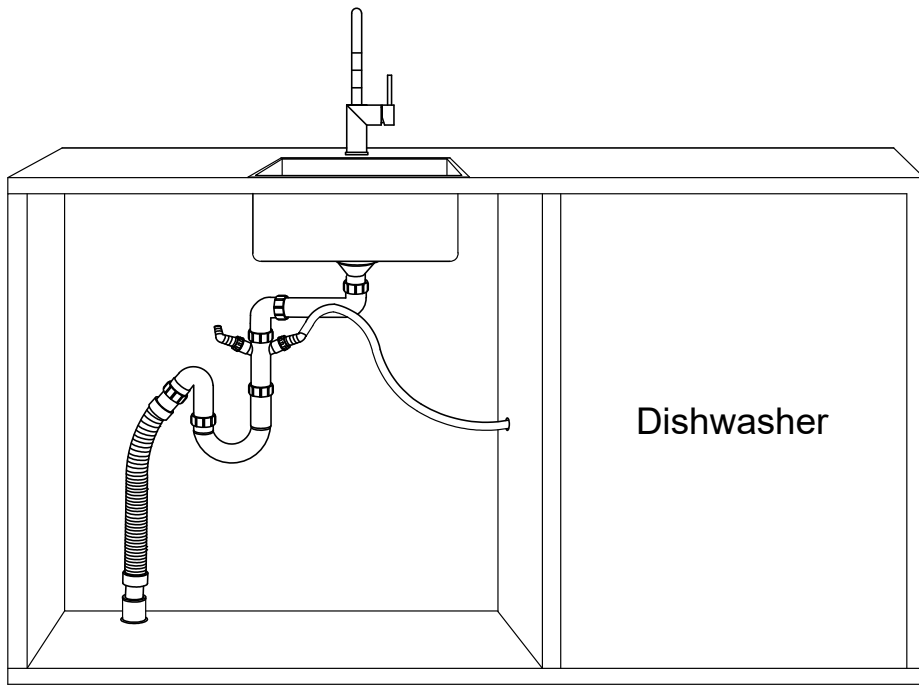
Sink care

Care instructions for you coloured Nivito stainless steel sink

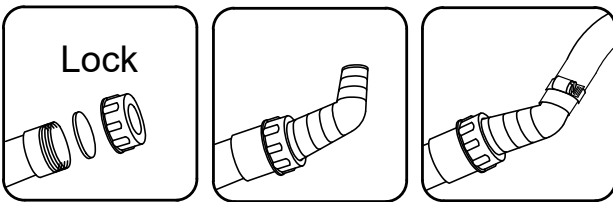
AVOID CONTACT WITH ROUGH OR DIRTY SURFACES as new polished stainless steel will show scratches!

- Coloured sinks should only be cleaned with soapy water and a soft cloth or sponge, then rinsed and towelled dry.
- The colouring is a solid coating (Physical Vapour Deposit) on the surface of the stainless steel only - harsh scratching should be avoided.
- Never use steel wool in or on the sink (steel wool should be avoided with any stainless steel sink, as it can leave steel deposits on the sink, which can cause rust).
- Never use harsh abrasive cleaning pads to clean coloured sinks.
- Never use harsh chemicals or bleaches to clean coloured sinks.
- Avoid prolonged contact with ordinary steel containers (e.g. tin cans), as these can rust and stain the sink.
- Avoid prolonged exposures to acids from fruit, fruit juices, salts, tea bags etc., as these may leave stains.

Connect supplies & drain fittings



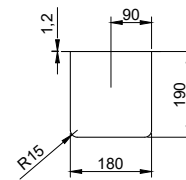
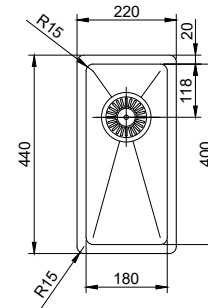
Dishwasher



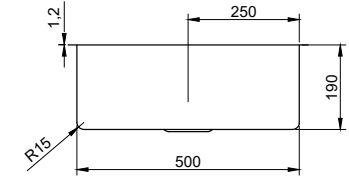
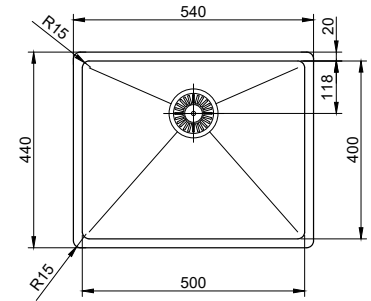
Lock

Conenect the sink drain, trap and waste fittings. Attach water supply and turn on the water and check for leaks. Fill the sink with water and check for possible leaks around the drain flange (s). Release water from the sink and check for possible leaks att drain connections or disposer connections. Correct any join thats leaks.

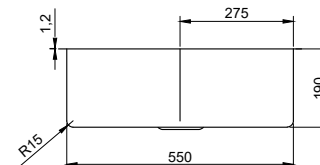
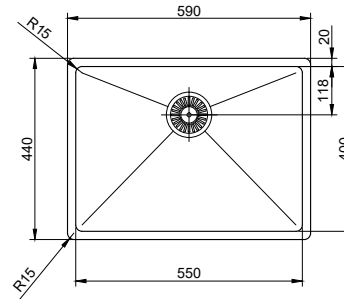
Cube180



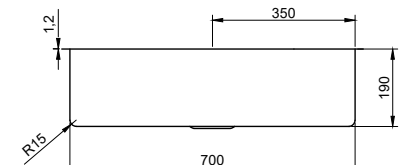
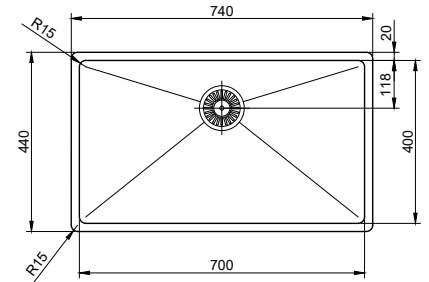
Cube500



Cube550



Cube700



Connect supplies & drain fittings



Check the condition of the sink before installation

Do not install if defects are found. By installing the sink, the owner / installer accepts that the product is free of defects.



Check if you have the correct sink model

The model number on the sink must match the model of sink the customer ordered. Do not install if incorrect.



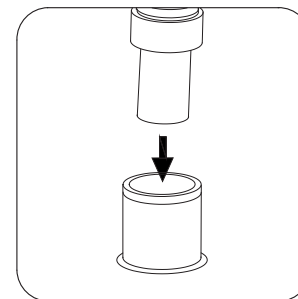
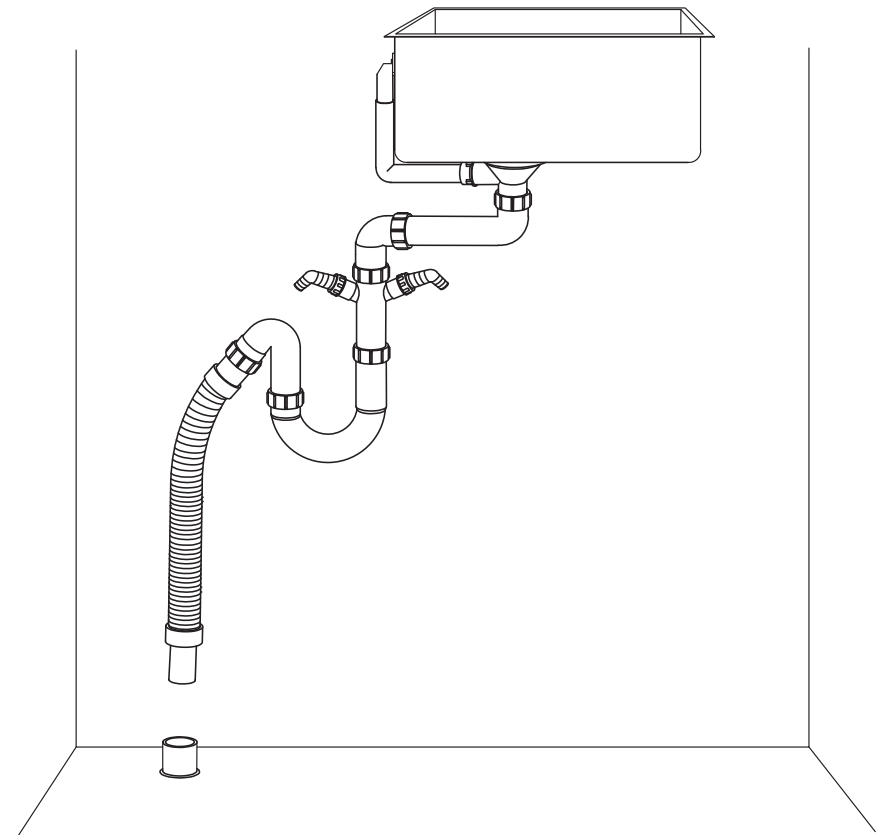
Avoid scratches

Stainless steel can be scratched if you are not careful during assembly.

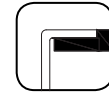
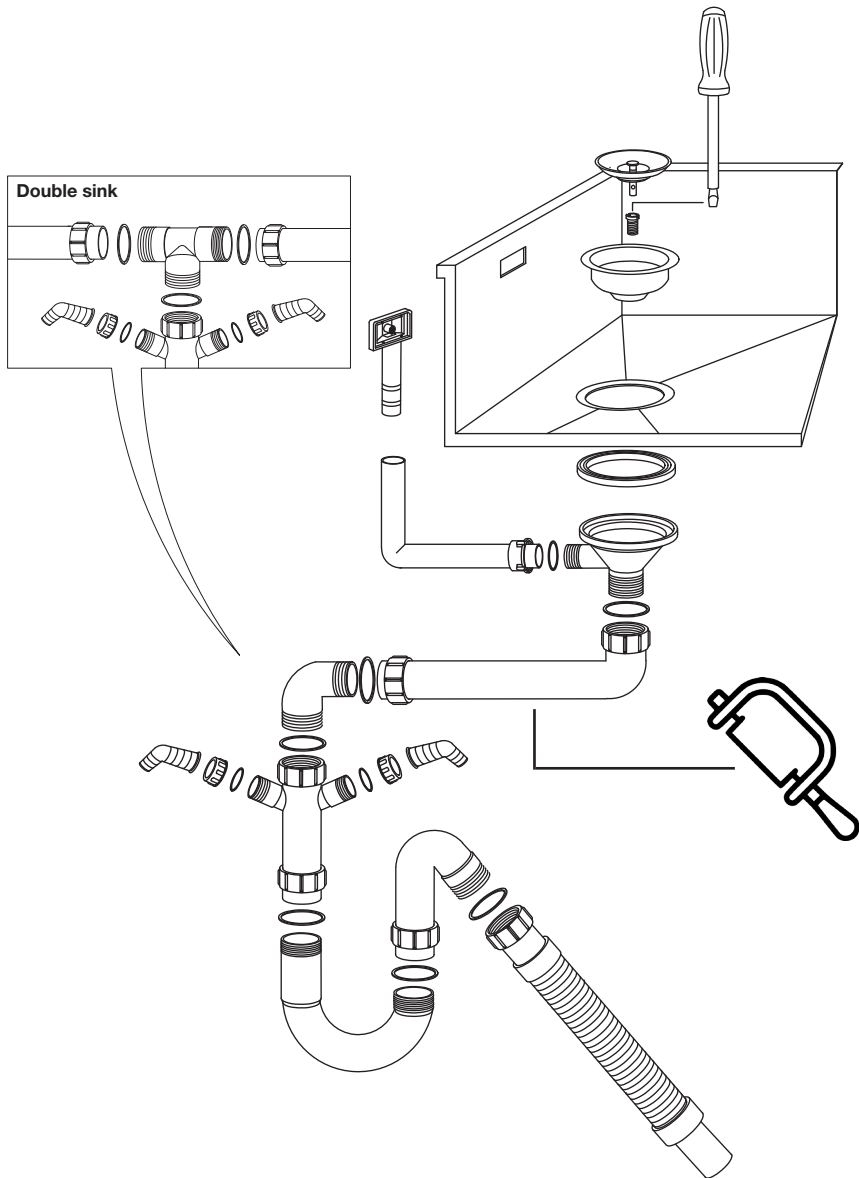


Please Note!

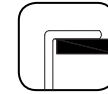
It's important that the installer reads thru the full manual.



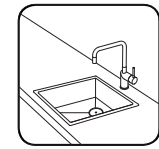
Connect supplies & drain fittings



Flush-Mount



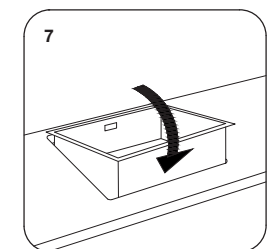
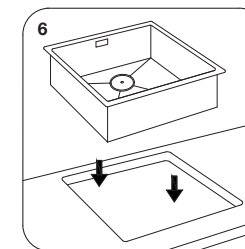
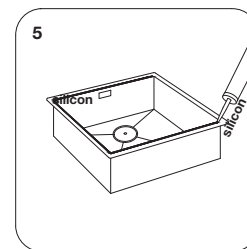
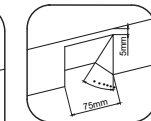
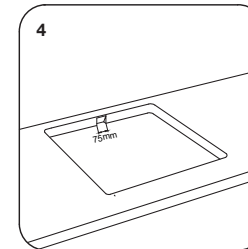
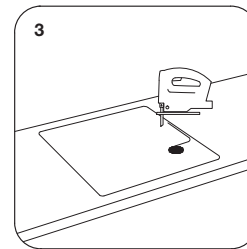
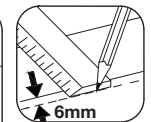
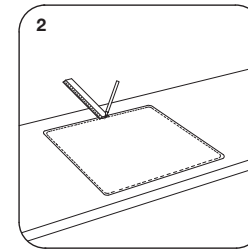
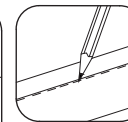
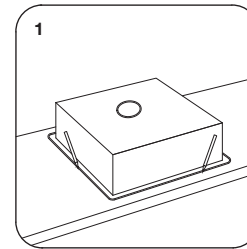
Top-mount



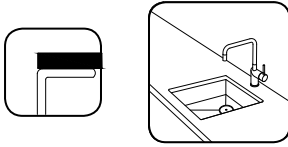
NEEDED TOOLS



PLEASE NOTE: drawings are not to scale.
They are to assist only.



Undermount

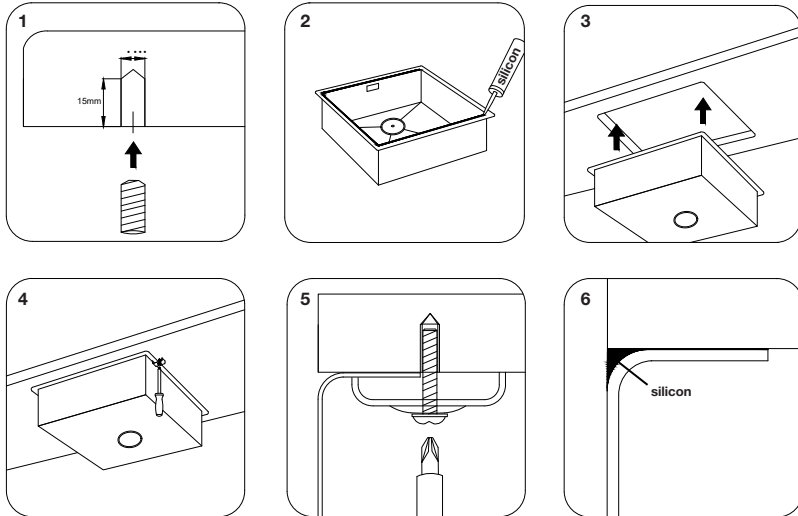


NEEDED TOOLS



Undermount installation For the undermount sinks, proceed as for the normal built-in sinks. Make a cut-out on the worktop following the template and/or instructions provided with the sink. Before installing the sink, seal with silicone. Tighten the brackets.

PLEASE NOTE: drawings are not to scale.
They are to assist only.



Connect supplies & drain fittings

